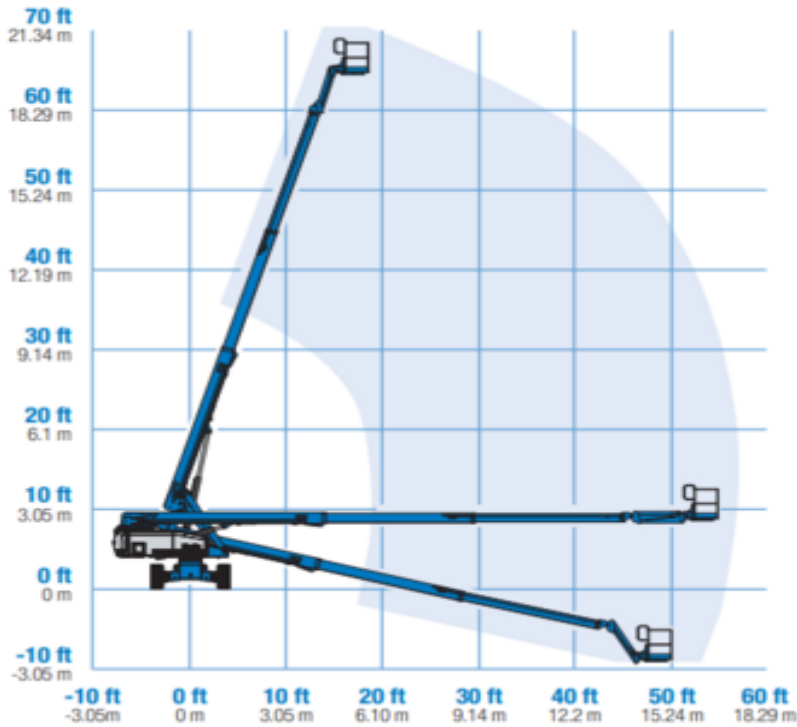




# Genie S65 Telescopic boom lift

Diesel

## Range Of Motion S-65 (500 lb capacity)



Rental code

DBT220

Machine rental classification

↕ 22

16.5

KG 227

Safety requirements



## Machine specifications

Lifting propulsion	Diesel	Platform dimensions (LxW)	0.91 x 2.44
Driving propulsion	Diesel	Rec. number of people	2
Max. working height (m)	21.8	Elevated manouvering	Yes
Max. platform height (m)	19.8	Terrain & tires	Outdoor Offroad, Foam filled
Max. working outreach (m)	16.51	Consumption (L/h)	8.2
Max. platform outreach (m)	16.51	CO2 emission per hour (Kg)	21.894
Max. lifting capacity (Kg)	227		
Machine weight (Kg)	10024		
Transport dimensions (LxWxH)	9.5 x 2.49 x 2.72		



Every effort has been made to present complete and accurate machine information. Riwal does not provide assurance or warranty of the information, and accepts no liability for potential damages. This document is intended as a selection guide. Please consult the machine inspection documentation accessible through Riwal for certified machine specifications.

Riwal Corporate  
+31 88 618 18 88  
info@riwal.com