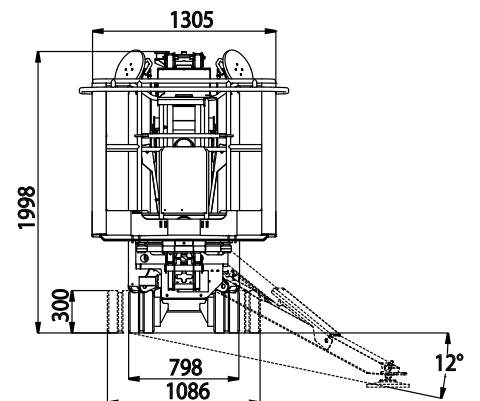
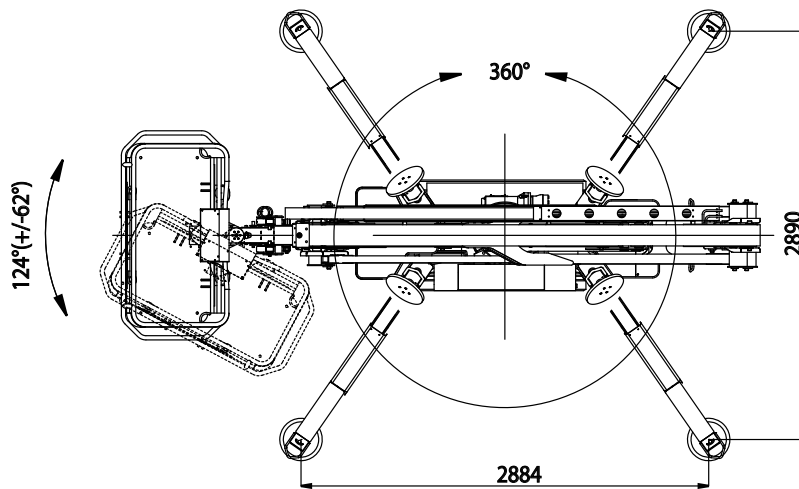
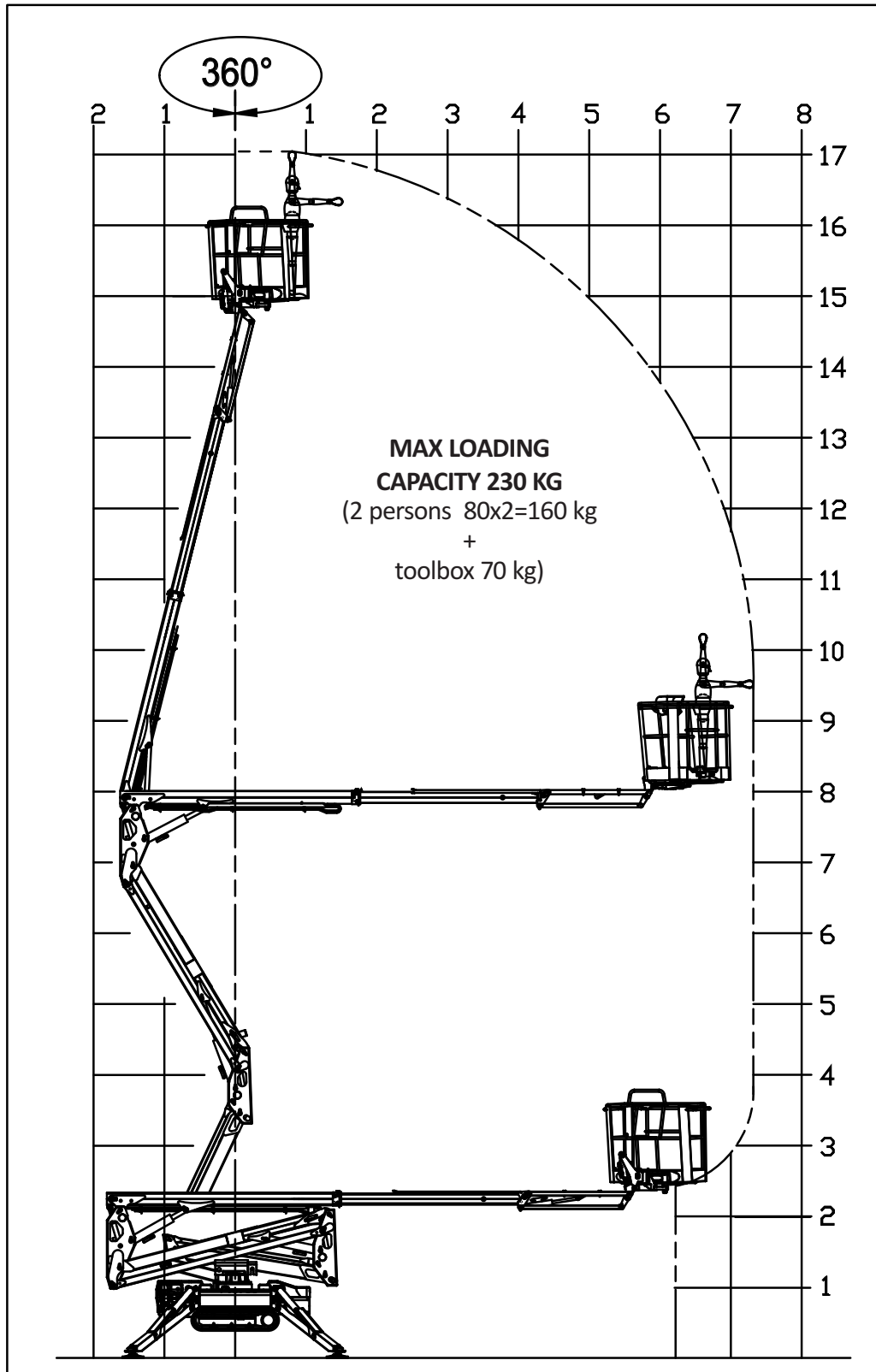


LIGHTLIFT 17.75 *PERFORMANCE III S*



LIGHTLIFT 17.75 *PERFORMANCE III S*



LIGHTLIFT 17.75 PERFORMANCE III S

PETROL ENGINE

BrandHONDA
TypeiGX440
Pistons no. and displacementsingle-cylinder 440 cc
Max. gross power.12,7 HP - 9,5 Kw @ 3600 rpm
Setting3600 rpm
Electrical start.....12 volt

DIESEL ENGINE

BrandHATZ
Type1B40 - HD Autorev
Pistons no. and displacementsingle-cylinder 462 cc
Max. gross power. 10 HP - 7.5 Kw @ 3600 rpm
Setting3600 rpm
Electrical start.....12 volt

ELECTRIC MOTOR

Standard.....230 V 50 Hz - 2,2 Kw 1500 rpm
Optional110 V 50 Hz - 2,2 Kw 1500 rpm

HYDRAULIC PUMPS

Type and no..... no. 2 gear pumps x 4 cc
Translation system/outriggers pressure165 bar
Aerial system pressure185 bar

TRACKED UNDERCARRIAGE

Track tensionergrease-filled
Rollers no. per side.....3 + slide
Widening system.....798 / 1086 mm
Translation speed1,8 km/h
Translation speed (with optional high speed)0,7 / 1,8 / 3,6 km/h

OPERATING WEIGHT 2230 kg
PETROL FUEL TANK5,9 litres
DIESEL FUEL TANK 5,0 litres
MAX UPPER SLANT15°
MAX WIND SPEED.....12,5 m/s



TRACKED AERIAL PLATFORMS

PERFORMANCE III

LIGHTLIFT 17.75

LITHIUM 100

ELECTRIC MOTOR

Electric motor	2kW/48V
Electric system voltage.....	48V-12V
Lithium battery pack	48V 90Ah / 100Ah
Estimated battery range on full charge.....	4-5 h
Onboard battery charger	220V±15% 50÷60Hz
Optional battery charger.....	110V±15% 50÷60Hz
Estimated recharge time on flat batteries	4 h
Estimated recharge time to 80% on flat batteries	2 h
No. of possible recharges	2000 cycles

HYDRAULIC PUMPS

Type and no.....	no.2 gear pumps x 4 cc
Translation system/outriggers pressure	165 bar
Aerial system pressure	210 bar

TRACKED UNDERCARRIAGE

Track tensioner	grease-filled
Rollers no. per side.....	3 + slide
Widening system.....	798 / 1086 mm
Translation speed (with optional high speed)	0,4 / 0,8 / 1,6 km/h

OPERATING WEIGHT 2300 kg

MAX UPPER SLANT15°

MAX WIND SPEED.....12,5 m/s