

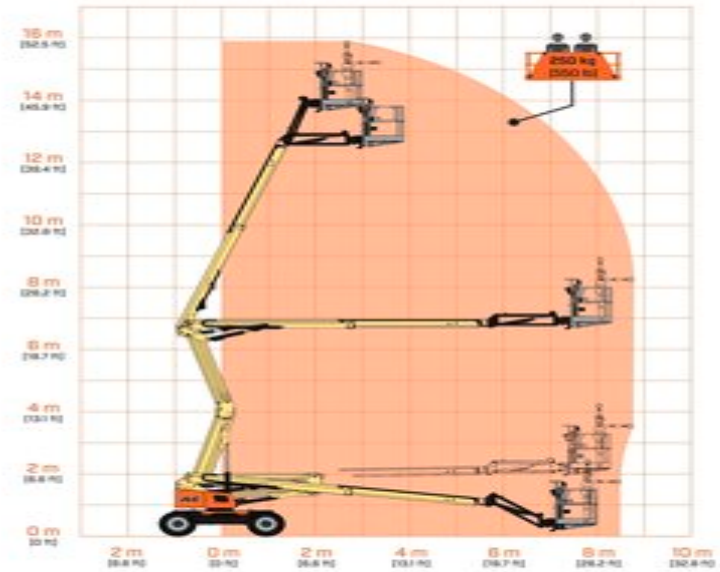
Rental codeEBA155

Machine rental classification

15.5

200

Safety requirements



Machine specifications

Lifting propulsion	Electric
Driving propulsion	Electric
Max. working height (m)	15.9
Max. working outreach (m)	8.9
Up and over height (m)	6.85
Drive speed (km/h)	4.8
Machine weight (Kg)	5500
Transport dimensions (LxWxH)	4.82 x 2 x 2.21
Platform dimensions (LxW)	null x null x 13.9

Swing radius (°)	355
Consumption (kWh)	6.2
CO2 emission per hour (Kg)	0.78585